



Signs of the Savior

.....
14 SYMBOLS THAT LEAD US TO JESUS

Signs of the Savior

Introduction

Christmas is a joyful time full of lights, music, and fun. But most of all, it is a time to celebrate the birth of Jesus. Long ago, Jesus was born in a quiet stable in Bethlehem. He came as a gift from God to show us how much we are loved.

This book shares the meaning behind fourteen special Christmas symbols. Each one tells us something important about Jesus and the first Christmas. You'll learn about things like the Advent wreath, the manger, and other signs that remind us of God's love, peace, and hope.

As you read about these symbols, we hope they help you understand why Christmas is such a holy and happy time. Most of all, we hope they help you feel closer to Jesus—the best gift of all.

Nativity Scene (Crèche)

The **Nativity Scene**, or **Crèche**, is a special display that shows the birth of Jesus. It includes figures of Mary, Joseph, Baby Jesus, shepherds, angels, and animals in a stable. The Nativity Scene is a reminder of God's love for us by sending his son to

the world. It helps us visualize that first Christmas night, showing us the humility and simplicity of Jesus' birth. Setting up a Nativity Scene at home or in church is a beautiful tradition that helps us prepare our hearts for Christmas.



Star of Bethlehem

The **Star of Bethlehem** is a bright star that guided the Wise Men to Baby Jesus. It represents God's guidance and light in our lives. The Star teaches us to follow God's direction, just as the Wise Men followed the star

to find Jesus. It reminds us that Jesus is the Light of the World, leading us out of darkness. During Christmas, seeing a star decoration helps us remember this miraculous event and encourages us to seek Jesus in our daily lives.



Angels

Angels are God's messengers, and they played an important role in the Christmas story. They appeared to the shepherds, announcing the joyful news of Jesus' birth. Angels remind us that God is always with us. He shows us his love and sends us messages through them.

During Christmas, angels symbolize the joy and glory of Jesus' arrival. Seeing angel decorations or hearing angelic carols helps us remember the heavenly celebration of Jesus' birth and encourages us to listen for God's guidance in our lives.



Wise Men (Magi)

The **Wise Men**, or **Magi**, traveled a long distance, guided by the Star of Bethlehem, to find Jesus. They brought gifts of gold, frankincense, and myrrh, recognizing Jesus as King. The Wise Men teach us about the importance of seeking

Jesus and offering our best to him. Their journey shows us that Jesus is for all people, from every nation. Seeing the Wise Men in the Nativity Scene reminds us to be generous and to honor Jesus with our lives and gifts.



Shepherds

Shepherds were the first to hear the news of Jesus' birth. They were humble people, taking care of their sheep. The shepherds remind us that Jesus came for everyone, especially the humble and lowly. They teach us to be humble and open to

God's message. When we see shepherd figures in the Nativity Scene, we remember their joy and excitement in meeting Baby Jesus. They inspire us to share the good news of Jesus with others and to approach him with a humble heart.



Mary and Joseph

Mary and Joseph are Jesus' earthly parents, showing great faith and obedience to God. Mary said "yes" to being Jesus' mother, and Joseph protected and cared for the Holy Family. Mary and Joseph are examples of trust and love. They teach

us to listen to God and to follow his plans, even when it's difficult. Seeing Mary and Joseph in the Nativity Scene reminds us of their important role in Jesus' life and inspires us to be faithful and loving in our own families.



Stable

The **stable** is where Jesus was born, symbolizing simplicity and humility. It reminds us that Jesus didn't come into the world in a grand palace but in a humble place. This teaches us that God values humility and simplicity. When we see the

stable in the Nativity Scene, we remember that Jesus is close to the poor and the humble. It encourages us to be humble, to appreciate simple blessings, and to open our hearts to Jesus, who came to live among us in a modest way.



Christmas Tree

The **Christmas tree** is a beautiful symbol of eternal life and the light of Christ. It reminds us that Jesus brings us everlasting life. Decorating the tree with lights and ornaments symbolizes the joy and celebration of Jesus' birth. Each ornament can

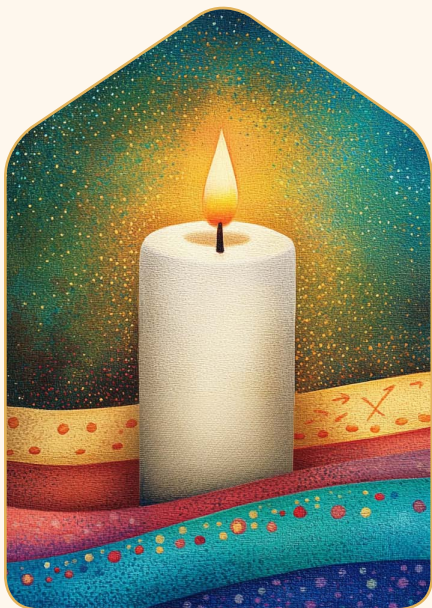
remind us of a special part of the Christmas story. The star on top of the tree represents the Star of Bethlehem, guiding us to Jesus. The Christmas tree helps us celebrate and remember that Jesus is the center of Christmas and the source of our joy.



Candle

Candles are a powerful symbol of Jesus as the Light of the World. Lighting a candle reminds us that Jesus brings light to darkness and hope to our lives. During Christmas we often see candles in Advent wreaths, or in church, symbolizing

our preparation for Jesus' coming. Each time we light a candle we remember that Jesus is with us, shining his light on our path. Candles also remind us to be lights in the world, sharing Jesus' love and kindness with others.



Advent Wreath

The **Advent wreath** is a special way to prepare for Christmas. It has four candles, one for each week of Advent, and sometimes a fifth candle for Christmas. Lighting each candle reminds us of the light and hope that Jesus brings. The wreath's circular shape represents

God's never-ending love. Each week, we focus on different themes like hope, peace, joy, and love. The Advent wreath helps us count down to Christmas and prepares our hearts to celebrate Jesus' birth. It's a time to pray, reflect, and grow closer to God.



Gifts

Gifts at Christmas remind us of the gifts given by the Wise Men to Baby Jesus and the ultimate gift of Jesus to us. We give and receive gifts to symbolize love and generosity. It's a way to show we care for each other, just as God showed his love

by giving us Jesus. When we give gifts, we remember the joy of the Wise Men and the joy we feel when we give to others. Christmas gifts remind us to be thankful and to share our blessings with those in need.



Christmas Carols

Christmas carols are joyful songs celebrating the birth of Jesus. Singing carols like “Silent Night” or “Away in a Manger” helps us feel the joy and wonder of Christmas. Carols tell the story of Jesus’ birth and spread the message of peace and goodwill.

Singing together with family and friends brings us closer and helps us celebrate the true meaning of Christmas. Carols remind us to rejoice in Jesus’ birth and to share the good news with everyone, filling our hearts with joy and our homes with music.



The Candy Cane

The candy cane is more than just a sweet treat at Christmas. It carries rich symbolism. Shaped like a shepherd's staff, it reminds us of the shepherds who were the first to hear the good news of Jesus' birth and visit Him in Bethlehem. The white color of the candy cane represents the purity of

Jesus, who was sinless, while the red stripes symbolize the blood He shed for us on the cross. The peppermint flavor can remind us of the hyssop plant used for purification in the Bible. When we enjoy a candy cane we can think about Jesus, our Good Shepherd, and how he cares for us and leads us with love.



Baby Jesus

Baby Jesus is the most important part of Christmas. He is God's special gift to us and shows us how much God loves us. Jesus was born in a small, simple stable, not a big palace. This reminds us to be humble and kind. When we see Baby Jesus

in the Nativity Scene, we remember that Christmas is about celebrating his birth. His coming brings hope, peace, joy and love to the world. Jesus wants us to welcome him into our hearts and share his love with others.

